



automatic fragmentation  
test for glass

## Cullet Scanner

# CulletScanner

**IQ** automatic fragmentation test for glass

**IQ** You want to do your fragmentation test fully automatic without any possibility of being manipulated?

**IQ** Archiving and documentation for years, is a fixed rule within your quality management?

**IQ** You do not want to rely on manual counting for this very important obligation to produce supporting documents?

**IQ** The whole fragmentation picture has to be archived?

In this case, the CulletScanner is the right tool for you!

## An Overview of the highlights

The hardware gets the whole glass breakage and send it directly to the according software of this impressive system. The software is Windows based and there are no special requirements to the Personal Computer hardware!

- 100% of the fragmentation are archived
- full automatic analysis of the whole glass
- no manipulation of the system possible
- 100% will be archived following special compression algorithm
- tempered and heat strengthened glass
- fullfilling of norms or special individual limitations



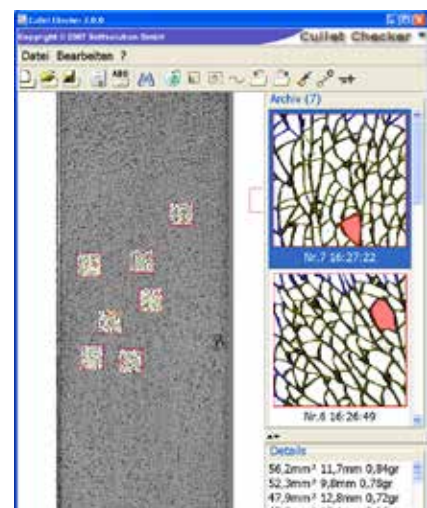
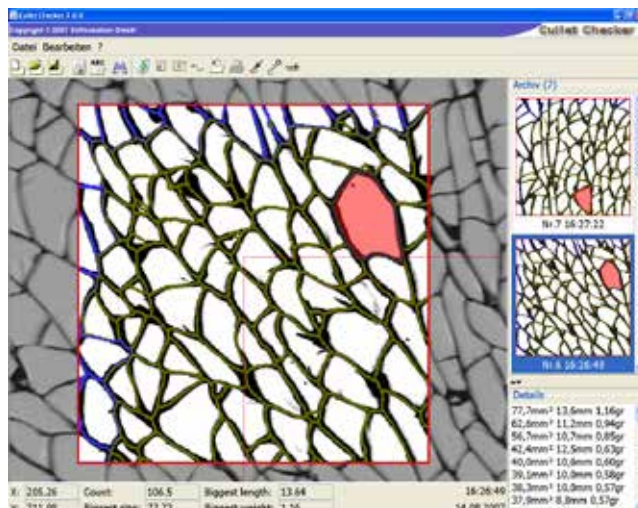


## Functionality of CulletScanner

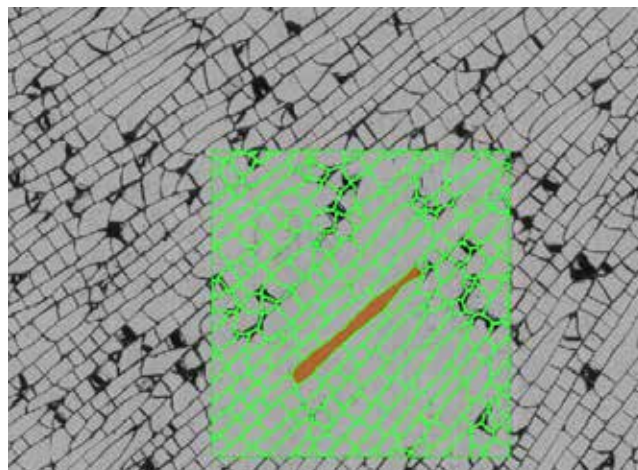
All the analyses are based on the full break pattern scan. Exclude areas around the edge of the test glass and the impact point can also be identified and will be ignored during any automatic analysis. The scan information will be archived with up to 400 dpi resolution using special data compression methods.

Each detailed analyses together with the amount of pieces, bigness and maximum length and weight will be completely documented. A review of all previous done analyses is available from central place, e.g. quality management, every time.

Automotive glass and any other coated or tinted glass types can be analysed.



Analysis area



Finding the longest fragment



## Certified Quality Assurance

### 3 Steps to full analysis

The scanner hardware transfers the entire break pattern to the connected software. the software is Windows based.

All analyses are based on the full break pattern scan. Exclude areas around the edge of the test glass and the impact point can also be identified and will be ignored during any automatic analysis. The scan information will be archived with up to 400 dpi.

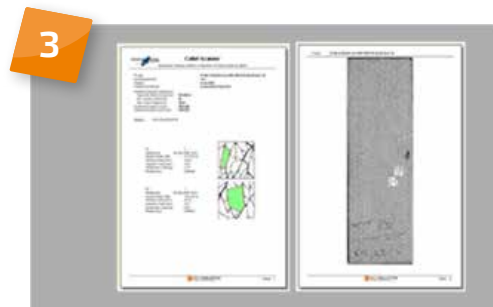
Within the archive database the certificate is stored and can be opened again easily later on (PDF document).



1 break the glass



2 scan the break pattern



3 detailed report

### Included in delivery:

- CulletScanner table
- license of analysing software for EN 12150, EN 1863, EN 14428, EN 14179, EN 31129, R43
- customer specific setup available
- optional a fully equipped PC can be supplied

GLASSIQ by SOFTSOLUTION GmbH  
Im Vogelsang 18, 3340 Waidhofen/Ybbs  
Tel. +43 7442 53988  
Fax +43 7442 53988-90  
sales@glass-iq.com  
www.glass-iq.com

